

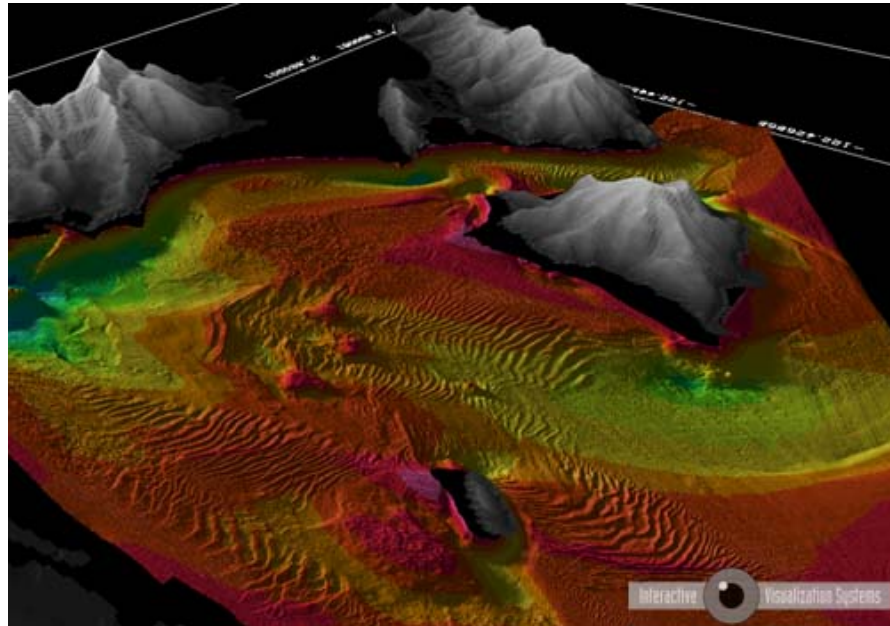
## IVS 3D Announces Availability of HS2 Format!

Fledermaus Professional Release 6.1.4 has added the ability to read multibeam data that is in the HS2 format used by the HYSWEEP® module of HYPACK®.

With the addition of the HS2 reader to our common parsing library, multiple Fledermaus applications can now be used to read HYSWEEP® data. Please note that HYPACK® only provides libraries for a Windows environment.

These include:

- ◆ OmniViewer for examining the contents of data files
- ◆ AvgGrid for the creation of gridded files
- ◆ PFMDirect for the creation of PFM data sets that can be used for area based editing.



With these new Fledermaus capabilities, there is no need for complicated time consuming data conversion processes. The hydrographer or engineer immediately has the ability to visualize efficiently and meaningfully their multibeam data set gathered that day.

The HS2 multibeam data format flows seamlessly into further processing using the Area Based Editing or CUBE function within Fledermaus. Once in Fledermaus, resulting scene files have fully customizable features such as difference surfaces, profiles or digital terrain models with shading and contouring in a fraction of the time it would normally take.

*“3D Visualization - more than just a pretty picture”*

325 Corporate Dr., Suite 175- Portsmouth, NH 03801 USA - Tel: (603) 431-1773 - Fax: (603) 766-0485  
Toll Free: 1-866-601-9126 - Email: info@ivs3d.com - Web: www.ivs3d.com

*HYSWEEP® is an optional module and a registered trademark of HYPACK® MAX*