

Route Planner

Route Planner is an application that is only available in the Fledermaus Professional Suite. This application supports the design and layout of pipeline or cable routes over top of a surface or bathymetric data.

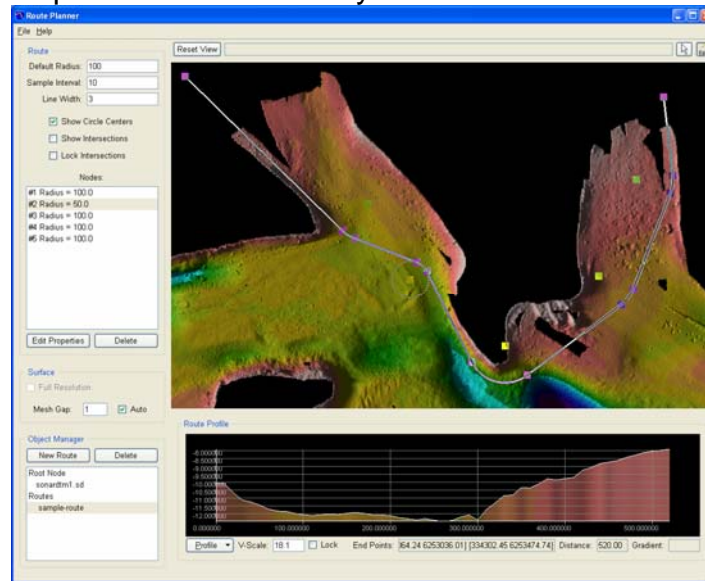


Figure 1. Route Planner with route and profile displayed.

Multiple routes can be laid over most of the SD objects that Fledermaus supports, including SonarDTMS and Geomages. RoutePlanner also supports interactively editing routes, changing circle radii and profiling along routes or straight lines.

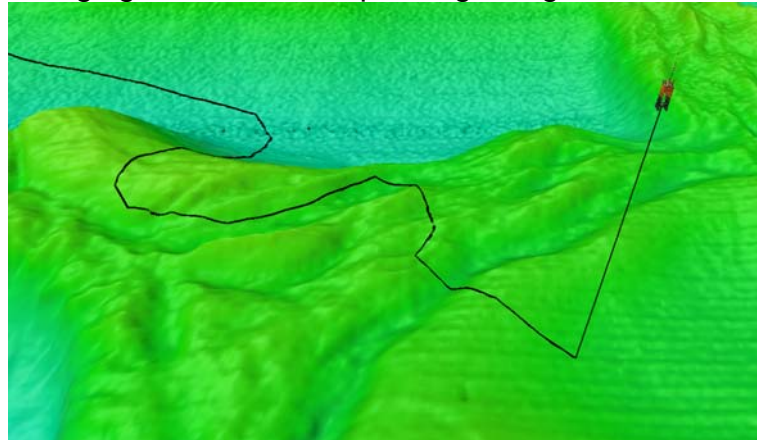


Figure 2. Fledermaus scene with a pipeline route created in Route planner displayed with oil rig and riser and multibeam bathymetry.

You can import an x,y ascii file and edit in Routeplanner. Routeplanner enables the user to export the route as an SD object (*.plf) for visualization in Fledermaus or as an x,y,z or xy ascii file.

“3D Visualization – more than just a pretty picture”

325 Corporate Dr., Suite 175 - Portsmouth, NH 03801 USA - Tel: (603) 431-1773 - Fax: (603) 766-0485
- Email: info@ivs3d.com - Web: www.ivs3d.com